



**2017  
PRODUCT  
CATALOG**

**LeoVince<sup>®</sup>**

**RIDE. DOMINATE. ROAR.**



STAINLESS  
STEEL



LEOVINCE

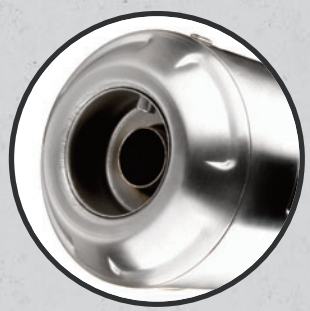
# CLASSIC RACER



## CAFÉ RACER

With the new **CLASSIC RACER** LeoVince has developed an exclusive product that fits well with the modern Urban Racer style. **CLASSIC RACER** is a tribute to the café culture, with its trumpet-shaped classic style, that, combined with LeoVince innovative materials and experience, gives your motorbike a unique retro look and unmistakable sound.

- ✓ **AISI 304 stainless steel**
- ✓ **End cap with brushed finish**
- ✓ **Embossed LeoVince logo**
- ✓ **Classic "retro" sound**
- ✓ **Easy to install**



Available for

MOTO GUZZI

TRIUMPH



**e**pass

LEOVINCE

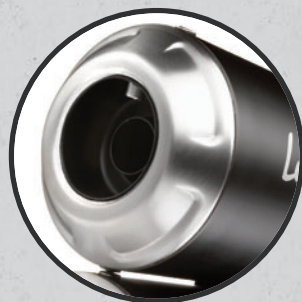
# GP DUALS



## TWICE THE SOUL

The GP DUALS is the new LeoVince slip-on inspired to the "GP" style, specifically developed for those who love customizing their bike with an exclusive product. Indeed, LeoVince has created with high quality materials an exhaust with unmistakable sound and aggressive design.

- ✓ **AISI 304 stainless steel**
- ✓ **Metallic ceramic-based black paint**
- ✓ **Matte finishing**
- ✓ **Sandblasted end cap**
- ✓ **Laser etched LeoVince logo**
- ✓ **Easy to install**



Available for:

|     |        |       |          |        |        |
|-----|--------|-------|----------|--------|--------|
| BMW | DUCATI | HONDA | KAWASAKI | SUZUKI | YAMAHA |
|-----|--------|-------|----------|--------|--------|

[leovince.com](http://leovince.com)

**LeoVince**  
 RIDE. DOMINATE. ROAR.

[info@leovince.com](mailto:info@leovince.com)



e pass

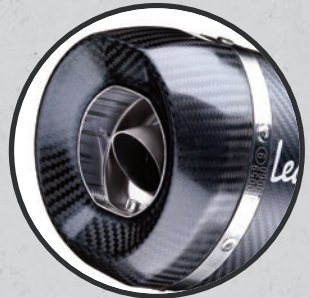
LEOVINCE

# FACTORY S



## RACING ATTITUDE

Italian spirit and fighting soul. All combined with a dark look. The LeoVince **FACTORY S carbon fiber** exhaust is the essence of LeoVince's research, which adapts the know-how developed in competition with each model to which the **FACTORY S** is intended.



- ✓ Conical shape sleeve
- ✓ Two layers pre-preg full carbon sleeve
- ✓ Matte finishing
- ✓ Full carbon end cap
- ✓ High temperature resistant packing (1,650 °F)
- ✓ Adjustable full carbon fastening strap

Available for

|         |     |        |       |          |        |         |        |
|---------|-----|--------|-------|----------|--------|---------|--------|
| APRILIA | BMW | DUCATI | HONDA | KAWASAKI | SUZUKI | TRIUMPH | YAMAHA |
|---------|-----|--------|-------|----------|--------|---------|--------|

leovince.com

**LeoVince**  
 RIDE. DOMINATE. ROAR.

info@leovince.com



**e**pass

LEOVINCE

# FACTORY S



## STAINLESS PASSION

High thermal resistance (900 °C) fiberglass wool is applied through the use of a single proprietary and volumised yarn, to allow the sound-absorbing material to expand freely, without the fibers losing integrity, greatly increasing the durability. The end cap is entirely made of carbon fiber to enhance the lightweight performance of the **FACTORY S**.

- ✓ Conical shape sleeve
- ✓ AISI 304 stainless steel sleeve
- ✓ Full carbon end cap
- ✓ High temperature resistant packing (1,650 °F)
- ✓ Adjustable full carbon fastening strap
- ✓ Laser etched Leovince logo



Available for

|         |     |        |       |          |        |         |        |
|---------|-----|--------|-------|----------|--------|---------|--------|
| APRILIA | BMW | DUCATI | HONDA | KAWASAKI | SUZUKI | TRIUMPH | YAMAHA |
|---------|-----|--------|-------|----------|--------|---------|--------|

[leovince.com](http://leovince.com)

**Leovince**  
 RIDE. DOMINATE. ROAR.

[info@leovince.com](mailto:info@leovince.com)



e pass

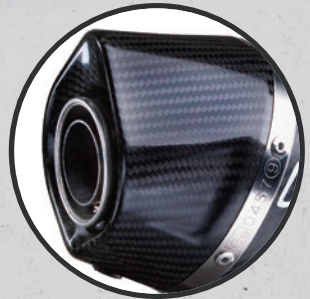
LEOVINCE

# LV ONE EVO



## TRADITION & INNOVATION

The new LeoVince LV ONE EVO carbon fiber is the synthesis between tradition and modernity. It combines the LeoVince classic style looks and innovation in the research of the most performing and lightweight materials.



- ✓ Two layers pre-preg full carbon sleeve
- ✓ Full carbon end cap
- ✓ Matte finishing
- ✓ High temperature resistant packing (1,650 °F)
- ✓ Adjustable full carbon fastening strap

Available for

|     |        |       |          |     |        |         |        |
|-----|--------|-------|----------|-----|--------|---------|--------|
| BMW | DUCATI | HONDA | KAWASAKI | KTM | SUZUKI | TRIUMPH | YAMAHA |
|-----|--------|-------|----------|-----|--------|---------|--------|

leovince.com

**LeoVince**  
 RIDE. DOMINATE. ROAR.

info@leovince.com



LEOVINCE

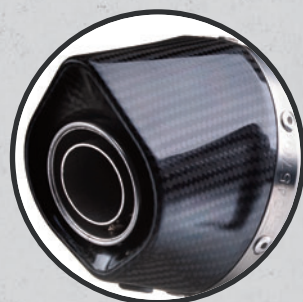
# LV ONE EVO



## COMPACT AND DECISIVE

The body in AISI 304 stainless steel makes the LV ONE EVO **stainless steel** slim and impact-resistant, giving it a distinguished look. The design with square lines also gives an exclusive compactness.

- ✓ AISI 304 stainless steel sleeve
- ✓ Full carbon end cap
- ✓ High temperature resistant packing (1,650 °F)
- ✓ Adjustable full carbon fastening strap
- ✓ Laser etched Leovince logo



Available for

|         |         |         |        |       |           |          |        |
|---------|---------|---------|--------|-------|-----------|----------|--------|
| APRILIA | BMW     | DUCATI  | GILERA | HONDA | HUSQVARNA | KAWASAKI | KTM    |
| MBK     | PEUGEOT | PIAGGIO | SUZUKI | SYM   | TRIUMPH   | VESPA    | YAMAHA |



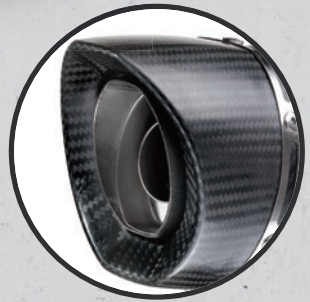
LEOVINCE

# LV PRO



## COMPACT POWER

The LeoVince LV PRO is the perfect combination between racing look and compactness. The LV PRO slip-on is the result of the LeoVince research of the best materials and craftsmanship. LV PRO carbon fiber sports a new aggressive and racing look with its "Shark Cut" end cap, which, combined with the small size, fully enhances the aesthetics of your bike.



- ✓ Full carbon sleeve
- ✓ Full carbon "Shark Cut" end cap
- ✓ Matte finishing
- ✓ High temperature resistant packing (1,650° F)
- ✓ Adjustable full carbon fastening strap

Available for

DUCATI

KAWASAKI

YAMAHA





STAINLESS  
STEEL

e pass

LEOVINCE

# LV PRO



ROAD



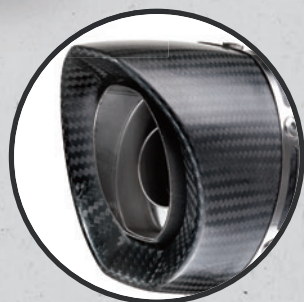
ADVENTURE



## COMPACT POWER

The LeoVince LV PRO is the perfect combination between racing look and compactness. The LV PRO slip-on is the result of the LeoVince research of the best materials and craftsmanship. LV PRO stainless steel sports a new aggressive and racing look with its "Shark Cut" end cap, which, combined with the small size, fully enhances the aesthetics of your bike.

- ✓ AISI 304 stainless steel sleeve
- ✓ Full carbon "Shark Cut" end cap
- ✓ High temperature resistant packing (1,650° F)
- ✓ Adjustable full carbon fastening strap
- ✓ Laser etched LeoVince logo



Available for

DUCATI

KAWASAKI

YAMAHA

[leovince.com](http://leovince.com)

**LeoVince**  
RIDE. DOMINATE. ROAR.

[info@leovince.com](mailto:info@leovince.com)



STAINLESS  
STEEL

e pass

LEOVINCE

# GP STYLE



## FROM MOTOGP WITH LOVE

The **GP STYLE** design is based on LeoVince's experience with the leading teams and technicians of the top class and provides the best combination of quality, performance and price for those who want to customize their motorbikes quickly and with few modifications while staying in full compliance with EU regulations.

- ✓ **AISI 304 stainless steel sleeve**
- ✓ **Full carbon bracket**
- ✓ **"Titanium look", sandblasted finishing**
- ✓ **High temperature resistant packing (1,650 °F)**
- ✓ **Laser etched LeoVince logo**



Available for:

DUCATI

KAWASAKI

KTM

SUZUKI

TRIUMPH

YAMAHA

[leovince.com](http://leovince.com)

**LeoVince**  
RIDE. DOMINATE. ROAR.

[info@leovince.com](mailto:info@leovince.com)

STAINLESS  
STEEL

e pass

LEOVINCE

# GP STYLE BLACK EDITION



## FROM MOTOGP WITH LOVE

The GP STYLE BLACK EDITION design is based on Leovince's experience with the leading teams and technicians of the top class and provides the best combination of quality, performance and price for those who want to customize their motorbikes quickly and with few modifications while staying in full compliance with EU regulations.

- ✓ AISI 304 stainless steel sleeve
- ✓ Full carbon bracket
- ✓ High temperature resistant packing (1,650 °F)
- ✓ Matte black ceramic painting
- ✓ Laser etched Leovince logo



Available for

DUCATI

KAWASAKI

KTM

SUZUKI

TRIUMPH

YAMAHA

leovince.com

**Leovince**  
RIDE. DOMINATE. ROAR.

info@leovince.com

LEOVINCE

# GP CORSA



## SLASH CUT

The LeoVince GP CORSA silencers offer the perfect balance between look, performance and price for the 4 stroke motorcycles up to 500cc. Inspired by the LeoVince experience in MotoGP, the design resumes the "Slash Cut" style which characterizes the premier class. To enhance the silencer, an alloy LeoVince logo has been applied which highlights the Italian product design.

- ✓ Two layers pre-preg full carbon sleeve
- ✓ Shining finishing
- ✓ AISI 304 stainless steel fastening strap
- ✓ Slash cut end cap



Available for

HONDA

KAWASAKI

YAMAHA

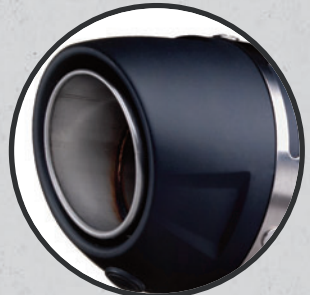
LEOVINCE

# GP CORSA EVO



## MATTE CARBON

The LeoVince **GP CORSA EVO** silencers offer the perfect balance between look, performance and price for the 4-stroke motorcycles up to 500cc. Inspired by the LeoVince experience in MotoGP, LeoVince developed a full carbon silencer with matte finishing and high performance Technopolymer end cap. To enhance the silencer, an alloy LeoVince logo has been applied which highlights the Italian product design.



- ✓ Two layers pre-preg full carbon sleeve
- ✓ Matte finishing
- ✓ AISI 304 stainless steel fastening strap rubber damper
- ✓ High performance Technopolymer end cap

Available for

HONDA

YAMAHA



STAINLESS  
STEEL

e pass

LEOVINCE

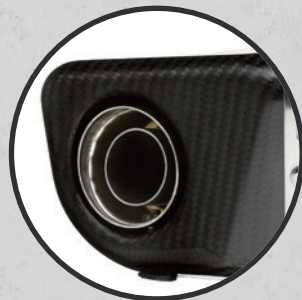
# UNDERBODY



## UNDER-ENGINE, ABOVE THE LINES

The LeoVince **UNDERBODY** is designed to emphasize the structure of each motorbike. The **UNDERBODY** is positioned under the crankcase, with the exit directed towards the outside, to optimize the weight distribution and to make the best use of the vehicle's center of gravity.

- ✓ AISI 304 stainless steel sleeve
- ✓ Full carbon end cap
- ✓ High temperature resistant packing (1,650 °F)
- ✓ Laser etched LeoVince logo
- ✓ Maintains the original weight distribution of the bike



Available for

KAWASAKI

KTM

YAMAHA

[leovince.com](http://leovince.com)

**LeoVince**  
RIDE. DOMINATE. ROAR.

[info@leovince.com](mailto:info@leovince.com)



**e**pass

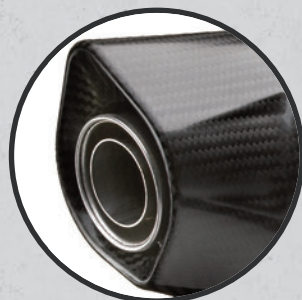
# LEOVINCE **NERO**



## JOIN THE DARK SIDE

Aggressive style and sharp lines. LeoVince **NERO** is the new muffler for motorbikes and maxi-scooters with a dark and modern look, the result of LeoVince's constant research of quality steels and exclusive processes.

- ✓ **AISI 304 stainless steel sleeve**
- ✓ **Full carbon end cap**
- ✓ **Metallic ceramic-based black paint**
- ✓ **Matte finishing**
- ✓ **Laser etched LeoVince logo**



Available for

|         |        |          |     |       |         |         |        |
|---------|--------|----------|-----|-------|---------|---------|--------|
| DUCATI  | HONDA  | KAWASAKI | KTM | KYMCO | PEUGEOT | PIAGGIO | SUZUKI |
| TRIUMPH | YAMAHA |          |     |       |         |         |        |



e pass

LEOVINCE

# GRANTURISMO



## MAXISCOOTER TAILOR MADE

Named for an Italian sporting tradition, LeoVince has realized with the **GRANTURISMO** a new sporty, competitive and absolutely original product. The combination of silencer and collector GrantTurismo represents the perfect synthesis among innovative design, resistance and long-lasting durability.

- ✓ **AISI 304 stainless steel body and heat shield**
- ✓ **Titanium look**
- ✓ **Stainless steel bracket with rubber damper mounting**
- ✓ **Multi-chamber system with high temperature resistant packing (1,650 °F)**



Available for

|        |        |          |       |     |         |         |        |
|--------|--------|----------|-------|-----|---------|---------|--------|
| GILERA | HONDA  | KAWASAKI | KYMCO | MBK | PEUGEOT | PIAGGIO | SUZUKI |
| VESPA  | YAMAHA |          |       |     |         |         |        |



STAINLESS  
STEEL

e pass

LEOVINCE

# GRANTURISMO BLACK EDITION



## MAXISCOOTER TAILOR MADE

Named for an Italian sporting tradition, LeoVince has realized with the **GRANTURISMO BLACK EDITION** a new sporty, competitive and absolutely original product. The combination of silencer and link pipe **GRANTURISMO BLACK EDITION** represents the perfect synthesis among innovative design, resistance and long-lasting durability.

- ✔ AISI 304 stainless steel body and heat shield
- ✔ Matte black ceramic painting
- ✔ Stainless steel bracket with rubber damper mounting
- ✔ Multi-chamber system with high temperature resistant packing (1,650 °F)
- ✔ Laser etched LeoVince logo



Available for

GILERA

HONDA

KAWASAKI

KYMCO

MBK

PEUGEOT

PIAGGIO

SUZUKI

VESPA

YAMAHA

leovince.com

**LeoVince**  
RIDE. DOMINATE. ROAR.

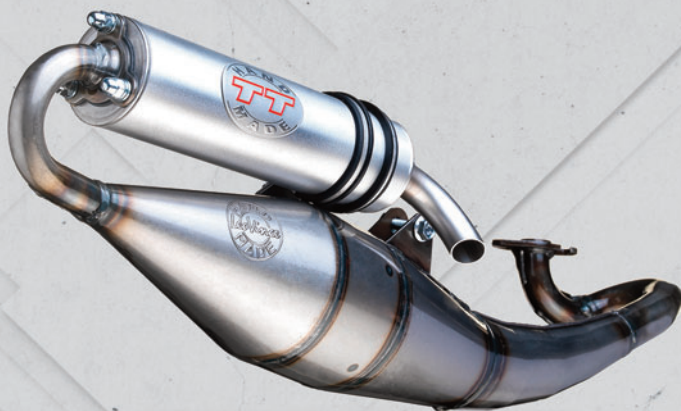
info@leovince.com



e pass

LEOVINCE

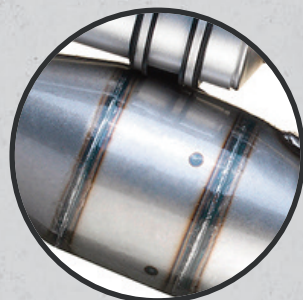
# HAND MADE TT



## DESIGN AND QUALITY FOR YOUR SCOOTER

Designed from the experience in the motorcycles' world, Leovince **HAND MADE TT** is the top range of sporting exhaust systems which combines high performance and quality design at a competitive price level.

- ✔ **Steel expansion chamber with transparent paint finishing**
- ✔ **Stainless steel silencer with aluminum sleeve**
- ✔ **Hand made TIG weldings**
- ✔ **Roller weights and CVT springs included**
- ✔ **Designed to enhance 2-stroke engine performance**



Available for

|         |         |          |         |        |        |       |          |
|---------|---------|----------|---------|--------|--------|-------|----------|
| APRILIA | CPI     | EXPLORER | GENERIC | GILERA | KEEWAY | KYMCO | MALAGUTI |
| MBK     | PEUGEOT | PIAGGIO  | QJ      | RIDE   | YAMAHA |       |          |

[leovince.com](http://leovince.com)

**Leovince**  
RIDE. DOMINATE. ROAR.

[info@leovince.com](mailto:info@leovince.com)



e pass

LEOVINCE

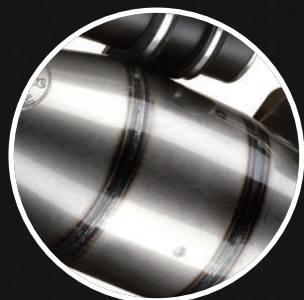
# HAND MADE TT BLACK EDITION



## DESIGN AND QUALITY FOR YOUR SCOOTER

Designed from the experience in the motorcycles' world, LeoVince **HAND MADE TT BLACK EDITION** is the top range of sporting exhaust systems which combines high performance and quality design at a competitive price level.

- ✔ **Steel expansion chamber with transparent paint finishing**
- ✔ **Stainless steel silencer with aluminum sleeve**
- ✔ **Hand made TIG weldings**
- ✔ **Roller weights and CVT springs included**
- ✔ **Designed to enhance 2-stroke engine performance**
- ✔ **Matte black ceramic painting**



Available for

|         |         |          |         |        |        |       |          |
|---------|---------|----------|---------|--------|--------|-------|----------|
| APRILIA | CPI     | EXPLORER | GENERIC | GILERA | KEEWAY | KYMCO | MALAGUTI |
| MBK     | PEUGEOT | PIAGGIO  | QJ      | RIDE   | YAMAHA |       |          |

leovince.com

**LeoVince**  
RIDE. DOMINATE. ROAR.

info@leovince.com



**e pass**

LEOVINCE

# X-FIGHT



## ROAD AND OFF

For all 2-stroke 50cc engines destined for off-road and street, LeoVince developed the new **HAND MADE X-FIGHT**, an E-Approved system, perfect for anyone who wants to customize their bike with a new and aggressively-styled product.

- ✓ Steel expansion chamber with transparent paint finishing
- ✓ AISI 304 stainless steel repackable silencer
- ✓ Hand made TIG weldings
- ✓ Full carbon fastening strap
- ✓ Laser etched LeoVince logo



Available for

APRILIA

BETA

DERBI

HM

MBK

RIEJU

YAMAHA

[leovince.com](http://leovince.com)

**LeoVince**  
RIDE. DOMINATE. ROAR.

[info@leovince.com](mailto:info@leovince.com)



e pass

LEOVINCE

# X-FIGHT BLACK EDITION



ROAD



OFF-ROAD



## ROAD AND OFF

For all 2-stroke 50cc engines destined for off-road and street, LeoVince developed the new **HAND MADE X-FIGHT BLACK EDITION**, an E-Approved system, perfect for anyone who wants to customize their bike with a new and aggressively-styled product.

- ✓ Steel expansion chamber with transparent paint finishing
- ✓ AISI 304 stainless steel repackable silencer
- ✓ Hand made TIG weldings
- ✓ Full carbon fastening strap
- ✓ Matte black ceramic painting
- ✓ Laser etched LeoVince logo



Available for

APRILIA

BETA

DERBI

HM

MBK

RIEJU

YAMAHA

leovince.com

**LeoVince**  
RIDE. DOMINATE. ROAR.

info@leovince.com



e pass

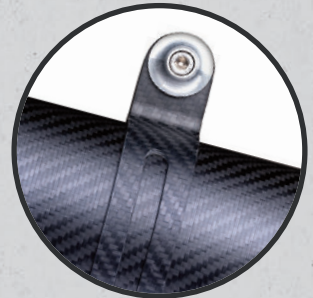
LEOVINCE

# LV ONE



## SBK HEART

The LV ONE silencer is oval shaped with flat upper and lower sections and is available in carbon fiber or stainless steel. The end cap is made of high performance technopolymer: light-weight and with high resistant to mechanical and thermal stress.



- ✓ Full carbon & AISI 304 stainless steel
- ✓ High performance Technopolymer end cap
- ✓ Adjustable full carbon fastening strap
- ✓ High temperature resistant packing (1,650 °F)

Available for

HONDA

KTM

YAMAHA

[leovince.com](http://leovince.com)

**Leovince**  
RIDE. DOMINATE. ROAR.

[info@leovince.com](mailto:info@leovince.com)



ALUMINUM

e pass

LEOVINCE

X3



## SON OF MUD

LeoVince has always been present in the Enduro world with its product, and the LeoVince Enduro X3 silencers exploit the technology and the know-how acquired through the development of exhaust-systems for competition.



- ✓ Semi-direct chamber internal structure
- ✓ High resistance aluminum sleeve
- ✓ Full carbon fastening strap
- ✓ Laser etched LeoVince logo

Available for

BMW

KAWASAKI

KTM

SUZUKI

YAMAHA

[leovince.com](http://leovince.com)

**LeoVince**  
RIDE. DOMINATE. ROAR.

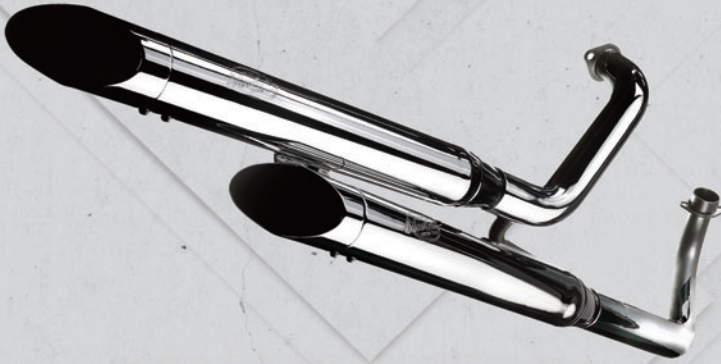
[info@leovince.com](mailto:info@leovince.com)

LEOVINCE

# SILVERTAIL K02

CHROMED  
STEEL

e pass



## STYLE AND PERFORMANCE

The exhausts are made of chromed steel and several of them also include the header pipes up to the cylinder flange. The kit also has a chrome heat shield casing cover, to avoid, in large cubic capacity motorcycles, bluing of the pipes. **SilverTail** brings in Europe the real American "metric cruisers" style.



- ✓ Fully chromed steel body
- ✓ Removable inner part of the muffler
- ✓ Chrome heat shield casing cover

Available for

HONDA

HYOSUNG

KAWASAKI

SUZUKI

YAMAHA





e pass

LEOVINCE

# TOURING



## A GREAT CLASSIC

LeoVince **TOURING** is one of the most complete exhaust ranges for the motor scooter sector. Incorporating a futuristic design, it has remained practical thanks to the modern-styled plastic heat protection casing.



- ✓ Conical expansion structure
- ✓ Plastic heat protection casing
- ✓ Expansion body made of 10/10 steel
- ✓ High temperature resistant electrostatic painting treatment

Available for

|         |        |       |          |     |         |         |       |
|---------|--------|-------|----------|-----|---------|---------|-------|
| APRILIA | GILERA | KYMCO | MALAGUTI | MBK | PEUGEOT | PIAGGIO | VESPA |
| YAMAHA  |        |       |          |     |         |         |       |

[leovince.com](http://leovince.com)

**LeoVince**  
RIDE. DOMINATE. ROAR.

[info@leovince.com](mailto:info@leovince.com)



# SITO SITO



## TWIN CHAMBER

SITO is a line of replacement silencers very similar to the original products, but built with Sito materials and quality. They are identical in external appearance to the OEM system, while their internal construction was redesigned to improve performance.



- ✔ **Steel replacement exhaust with the renowned SITO quality**
- ✔ **High temperature resistant electrostatic painting treatment**
- ✔ **Plastic heat protection casing**

Available for

|         |         |          |       |          |         |        |       |
|---------|---------|----------|-------|----------|---------|--------|-------|
| APRILIA | BENELLI | CPI      | DERBI | EXPLORER | GENERIC | GILERA | HONDA |
| KEEWAY  | KYMCO   | MALAGUTI | MBK   | PEUGEOT  | PIAGGIO | QJ     | RIDE  |
| SUZUKI  | VESPA   | YAMAHA   |       |          |         |        |       |



e pass

SITO

# SITOPPLUS



## BETTER PERFORMANCE

SITOPPLUS for 2-stroke engine is an exhaust system line for best-selling motorcycles and scooters in Europe that, while looking like those originally fitted, are completely re-designed in the internal structure and guarantee a better performance to the engine, especially at low-medium RPMs

- ✓ High performance steel replacement exhaust
- ✓ O.E. look
- ✓ PA66 nylon heat shield
- ✓ High temperature resistant electrostatic painting treatment



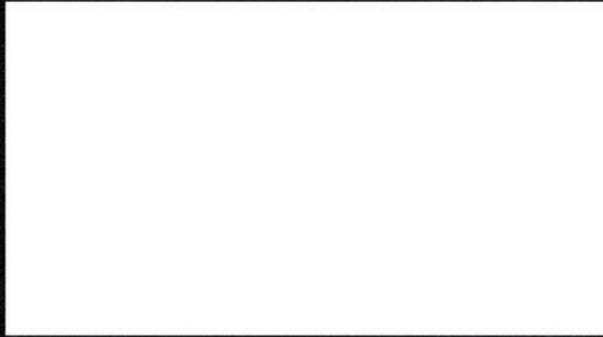
Available for

|         |         |        |       |         |     |          |     |
|---------|---------|--------|-------|---------|-----|----------|-----|
| APRILIA | BETA    | GILERA | HONDA | ITALJET | LML | MALAGUTI | MBK |
| PEUGEOT | PIAGGIO | TOMOS  | VESPA | YAMAHA  |     |          |     |

leovince.com

**LeoVince**  
 RIDE. DOMINATE. ROAR.

info@leovince.com



Leovince®



RIDE. DOMINATE. ROAR.

leovince.com  
info@leovince.com

